

# MAGICAL SCRIPTS AND CIPHER ALPHABETS

## From the Nu Isis Working Group

### The Theban Script

Also known as the Alphabet of Honorius, the Witches' Alphabet, *etc.* It is referred to the Latin alphabet and written left to right (the last character, referred to the Greek Omega, is not generally used as a letter, rather as a period or separator). This script was popularised by Agrippa's *De Occulta Philosophia* (it appears in lib. III cap. XXIX, *De characteribus et sigillis spirituum*), although it may have appeared in earlier works such as the *Polygraphia* of Trithemius. The alphabet is traditionally ascribed to one 'Honorius the Theban', probably the author of the *Liber Juratus* (the *Sworn Book of Honorius*), a medieval work on magic, although as far as I am aware this script does not appear in that work.

Theban A

𐛀	𐛁	𐛂	𐛃	𐛄	𐛅	𐛆	𐛇	𐛈	𐛉	𐛊	𐛋	𐛌
A	B	C	D	E	F	G	H	I, J	K	L	M	
𐛍	𐛎	𐛏	𐛐	𐛑	𐛒	𐛓	𐛔	𐛕	𐛖	𐛗	𐛘	𐛙
N	O	P	Q	R	S	T	U, V, W	X	Y	Z	Ω	

Theban B

𐛀	𐛁	𐛂	𐛃	𐛄	𐛅	𐛆	𐛇	𐛈	𐛉	𐛊	𐛋	𐛌
A	B	C	D	E	F	G	H	I, J	K	L	M	
𐛍	𐛎	𐛏	𐛐	𐛑	𐛒	𐛓	𐛔	𐛕	𐛖	𐛗	𐛘	𐛙
N	O	P	Q	R	S	T	U, V, W	X	Y	Z	Ω	

### Magical scripts corresponding to Hebrew

These appeared in Agrippa's *De Occulta Philosophia* (lib. III cap. XXX, *Alius characterizandi modus a cabalistic traditus*) and are referred to the Hebrew alphabet. They do not include distinct final forms for any letters, although Malachim has a variant form of Samekh which may correspond to the otherwise unknown 'Samekh final' alluded to in some magical works. Malachim is also called 'Angelic' or 'Regal' (from Heb., מלכים, 'Kings') by Agrippa.

### The Characters of Celestial Writing

Celestial A

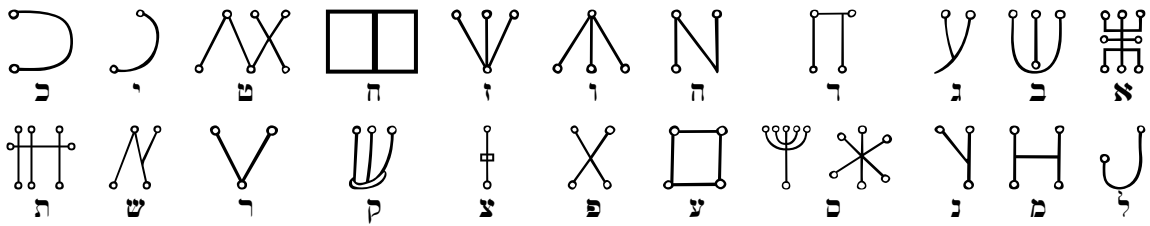
𐛀	𐛁	𐛂	𐛃	𐛄	𐛅	𐛆	𐛇	𐛈	𐛉	𐛊	𐛋	𐛌
𐛍	𐛎	𐛏	𐛐	𐛑	𐛒	𐛓	𐛔	𐛕	𐛖	𐛗	𐛘	𐛙

Celestial B

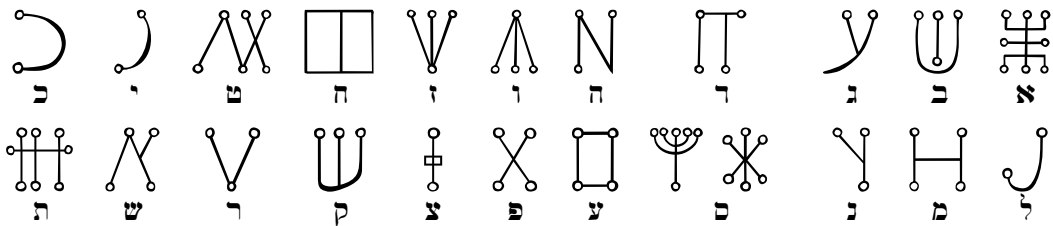
𐛀	𐛁	𐛂	𐛃	𐛄	𐛅	𐛆	𐛇	𐛈	𐛉	𐛊	𐛋	𐛌
𐛍	𐛎	𐛏	𐛐	𐛑	𐛒	𐛓	𐛔	𐛕	𐛖	𐛗	𐛘	𐛙

**The Writing called Malachim**

*Malachim A*

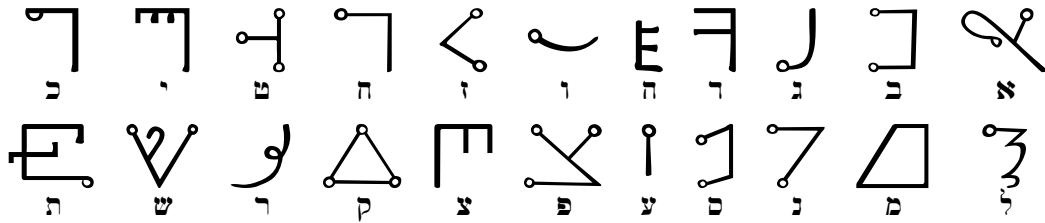


*Malachim B*

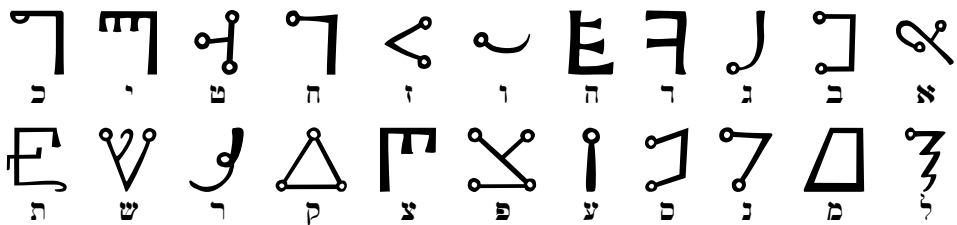


**The Writing called the Passing of the River**

*Passing of the River A*

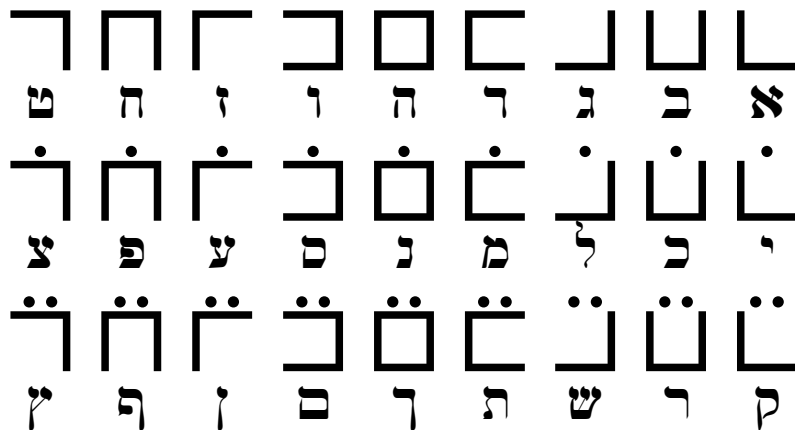


*Passing of the River B*



**The Aiq Bkr Cipher**

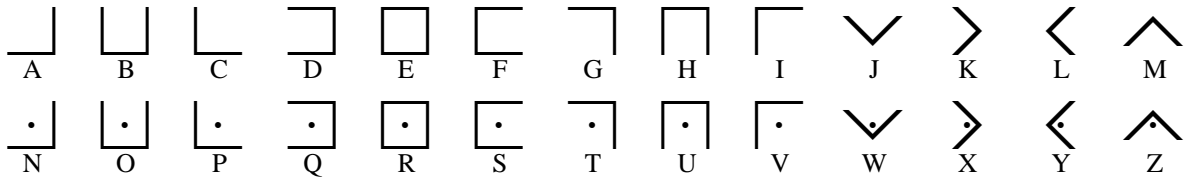
This is also described by Agrippa (*loc. cit*) and does contain distinct final forms. Agrippa also gives an example of how the characters can be combined to form Sigils from Angelic Names and the like.



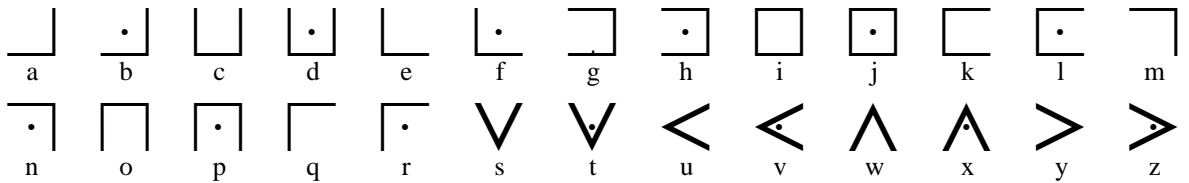
## The Royal Arch Cipher

This is a simple cipher for the English alphabet, loosely based on the Qabalistic *Aiq Bkr* cipher; it is taken in this instance from *Duncan's Masonic Monitor*. There are two versions of the cipher; one is on the upper case keys, one on the lower case keys.

*The Royal Arch cipher (first form – upper case)*

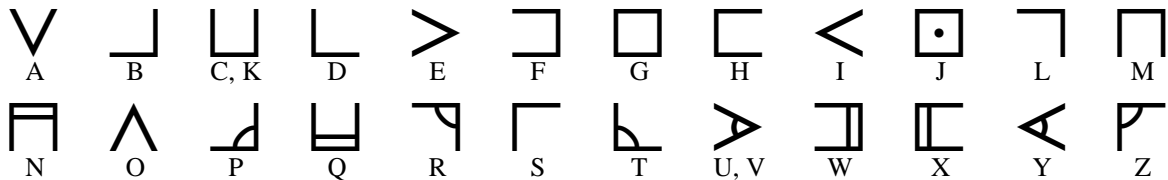


*The Royal Arch cipher (second form – lower case)*



## ⌘ Alphabet of Rug-Soth

This is a slight variant on the Royal Arch cipher which appeared in the Hay-Wilson-Langford-Turner *Necronomicon*. While generally corresponding to the English alphabet, C and K are not distinguished, nor are U and V.



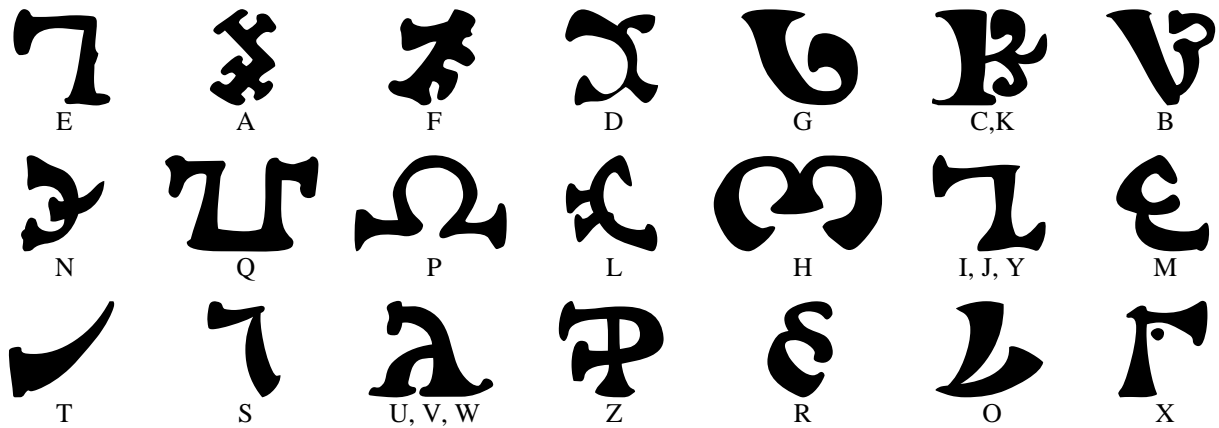
## The Illuminati Ciphers

These ciphers were published in *A History of Secret Societies* by Akron Daraul (a pseudonym of Idries Shah) and are alleged to have been used by the infamous Bavarian Illuminati. U and V are distinguished, but I and J are not. A third Illuminati cipher replaces the letters with numbers – A with 12, B with 11, and so on down to M with 1; then N with 13, O with 14 and so on to Z=24 (here U and V are not distinguished). There is also one set of cipher characters for the digits. These ciphers are used to spell out cryptic messages in some of the illustrations to *Cosmic Trigger* by R.A. Wilson.

	A	B	C	D	E	F	G	H	I, J	K	L	M	
Cipher 1	12	11	10	9	8	7	6	5	4	3	2	1	
Cipher 2 (uppercase)	⊕	⊗	┌	┐	└	⊙	┘	•	+	♀	┌	┐	
Cipher 3 (lowercase)	┘	└	☾	┌	✱	┘	┘	-	△	⊕	♀	△	
	N	O	P	Q	R	S	T	U	V	W	X	Y	Z
Cipher 1	13	14	15	16	17	18	19	20	21	22	23	24	
Cipher 2	H	T	:	└	X	◇	┌	┐	⊗	⊕	:	∞	
Cipher 3	△	♂	□	∞	⊖	⊙	⊕	⊕	⊕	♀	♂	⊗	
	0	1	2	3	4	5	6	7	8	9			
	⋮	•	◐	◑	□	3	✂	✂	✂	✂			

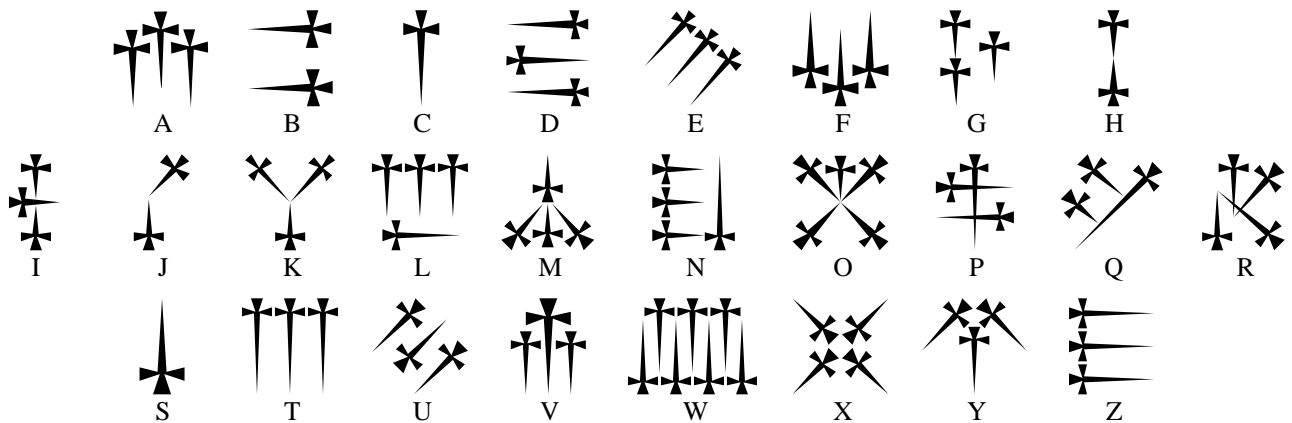
### The Enochian Alphabet.

This script emerged from the ceremonial skrying of John Dee and Edward Kelly. The name 'Enochian' was applied by later writers; for Dee it was the 'Angelic' or 'Adamical' alphabet. There is some evidence that it should be written right to left.



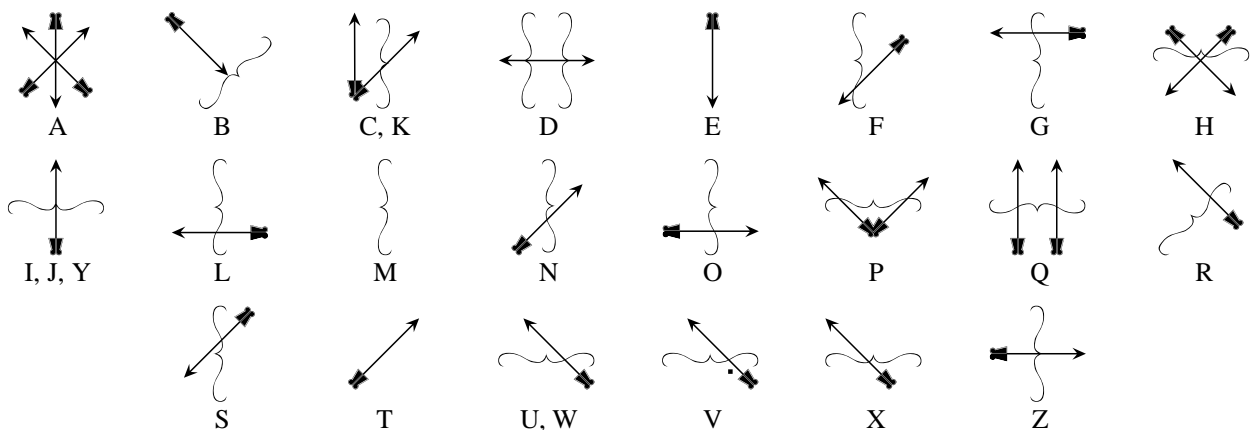
### The Alphabet of Daggers

This is a magical script which appears in Crowley's *The Vision and the Voice*. It corresponds to the English alphabet.



### The Alphabet of Arrows

Continuing the theme of sharp pointy things, this is another script from *The Vision and the Voice*. The letters approximately map to the Enochian alphabet, although V is distinguished from U and W.



Fonts and filenames

<i>Filename</i>	<i>Font name</i>	<i>Script</i>
niaiarg_.ttf	NI AIQ BKR	The Aiq Bkr cipher
niarrg_.ttf	NI Arrows	The Alphabet of Arrows
nicearg_.ttf	NI CelestialA	The Characters of Celestial Writing (version A)
nicebrg_.ttf	NI CelestialB	The Characters of Celestial Writing (version B)
nidarg_.ttf	NI Daggers	The Alphabet of Daggers
nienrg_.ttf	NI Enochian	The Enochian alphabet
nihearg_.ttf	NI HebrewA	Hebrew
niilrg_.ttf	NI Illuminati	The Illuminati ciphers
nimaarg_.ttf	NI MalachimA	The Writing called Malachim (version A)
nimabrg_.ttf	NI MalachimB	The Writing called Malachim (version B)
ninusrg_.ttf	NI Nug-Soth	Y° Alphabet of Nug-Soth
nipaabrg.ttf	NI PassingRiverA	The Writing called The Passing of the River (version A)
niparbrg.ttf	NI PassingRiverB	The Writing called The Passing of the River (version B)
niroarg_.ttf	NI Royal Arch	The Royal Arch cipher
nitharg_.ttf	NI ThebanA	The Theban Script (version A)
nithbrg_.ttf	NI ThebanB	The Theban Script (version B)

Of the four scripts for which a “version A” and “version B” is given, the A (Agrippa) versions are based on scans of the scripts from *De occulta philosophia* (as reproduced in the 1992 critical Latin edition – the versions in the Llewellyn edition appear to have been redrawn by a modern illustrator); the B (Barrett) versions are based on scans of the plate of magical alphabets in *The Magus*. The Enochian alphabet is based on a scan of the letters from Sloane MS 3188 as reproduced by Laycock. The Alphabet of Daggers is based on a scan the plate in *Equinox I* (5); the Alphabet of Arrows was not scanned but drawn from scratch in CorelDraw following the figure in *Equinox IV* (2).

Key mappings for Hebrew and scripts referred to Hebrew (both upper and lower case keys map to the same glyph, with the exception of Samekh in Malchim, where s gives שׁ and S gives שׂ). Final forms only on the ordinary Hebrew and Aiq Bkr cipher fonts.

Aleph	A	
Beth	B	
Gimel	G	
Daleth	D	
Hé	H	
Vau	V, W	
Zayin	Z	
Cheth	J	
Teth	F	
Yod	I, Y	
Kaph	K	Kaph final ]
Lamed	L	Variant Lamed
Mem	M	Mem final \
Nun	N	Nun final }
Samekh	S	
Ayin	O, U	
Pé	P	Pé final [
Tzaddi	X	Tzaddi final {
Qoph	Q	
Resh	R	
Shin	C	
Tau	T	

